

**NB** NexBarrier series  
Glass LED Barrier



Transparent and  
simple design



Safe and reliable



Eco-friendly



Complete solution



NB series use a high density industrial tempered glass as the base material, matched with NEXNOVO' s patented integrated-IC technology and its applied Nano film circuits. These techniques combined, gives way to super-high transparency and high energy efficient glass LED displays. This series of glass LED will definitely give value to any new or existing glass barriers, enabling them to become revenue generators, not only an architecture and safety structures. These NEXNOVO LED glass barriers will open many new creative possibilities for architects and designers.

These barriers are widely used in airports, train stations, metro stations, shopping malls, lounge, tourist site balustrades, stadiums, plazas, and many more environments.

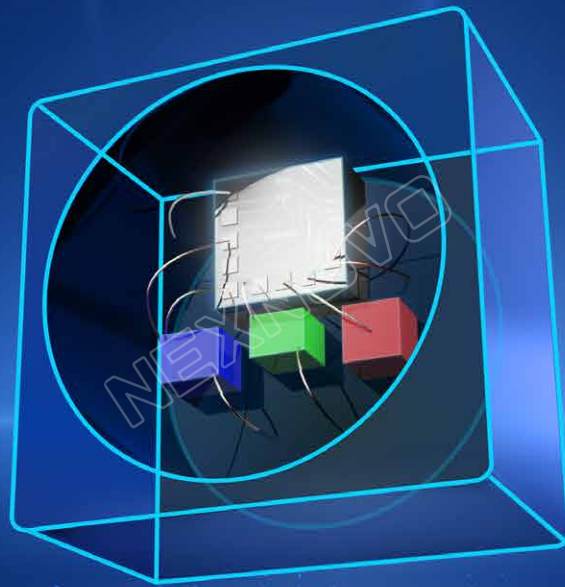


Core technology

# Research and development of integrated-IC technology

---

- Pushing transparency in our displays to a new level.
- Creating new and better ways to communicate with our displays.



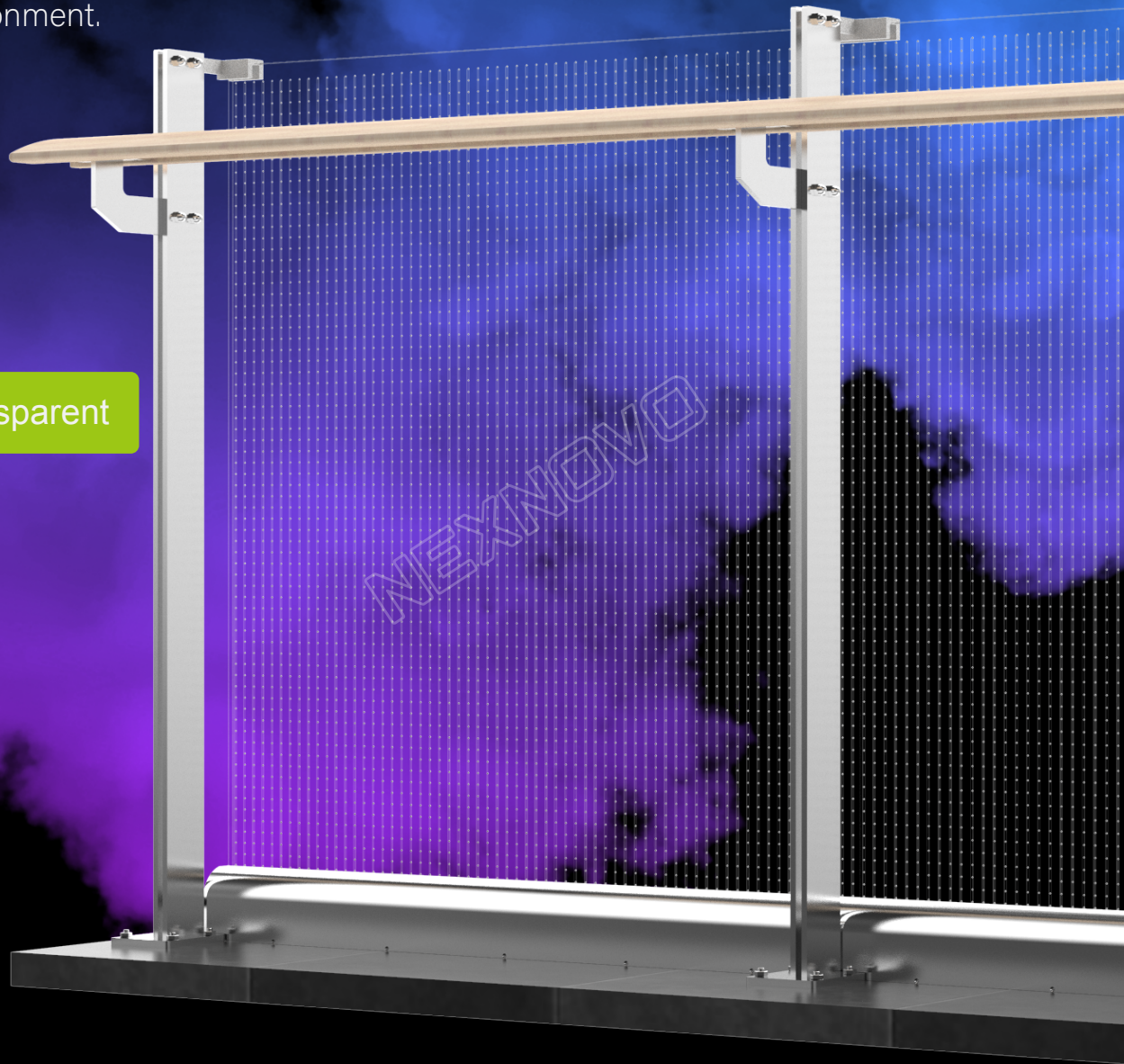
# A simple fusion of traditional barriers and ultra-transparency Glass LED displays

---

---

The mix of stunning 95% transparent Glass LED displays and barrier structures shall offer an ascetic and fully functional communication element to any environment.

**95%** transparent





# A stable, reliable and easy control system

---

---

NEXNOVO's self-developed control system, perfectly match to the display's innovative side, providing fast response and ease of operation.

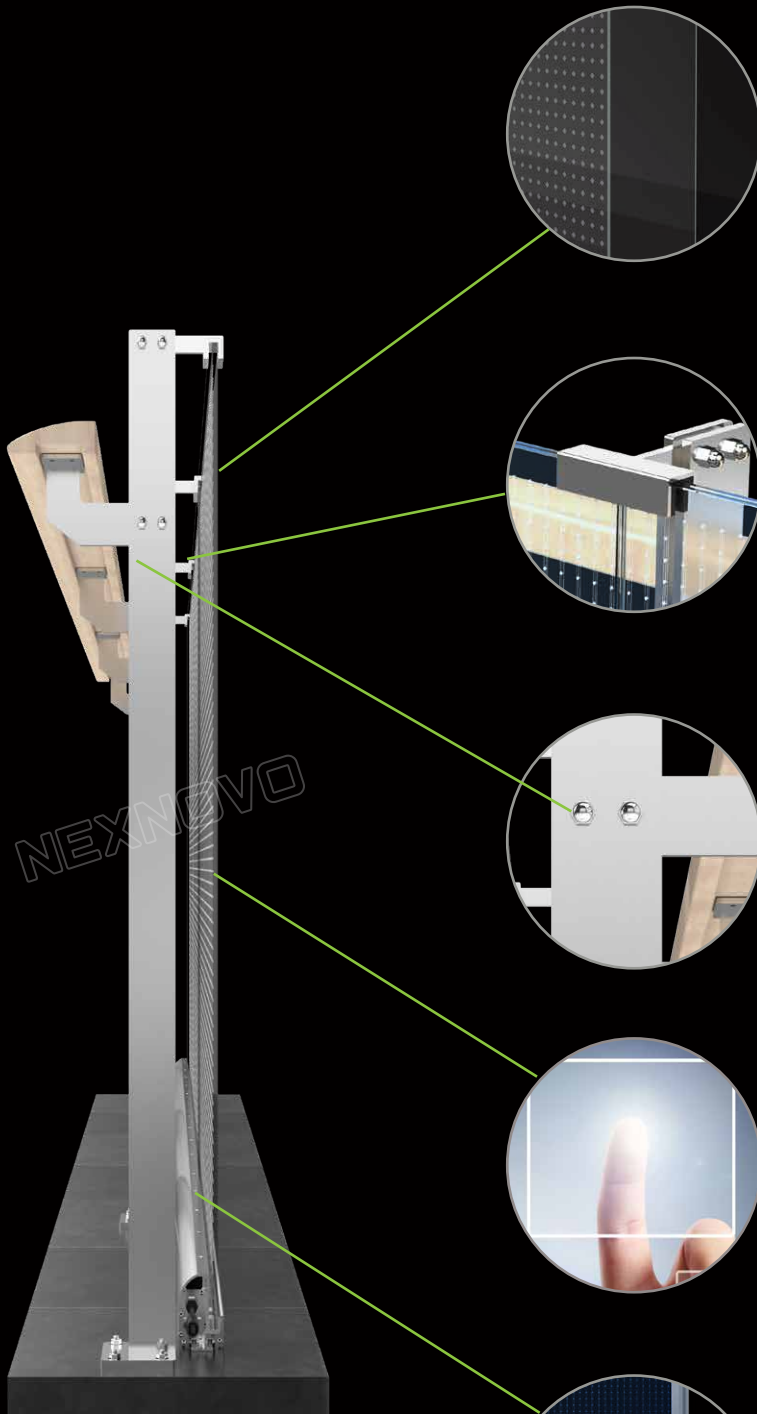
With a built-in HDMI port, offering full market compatibility.



# Reliable products, creating a sense of security

---

---



Preventing inwards shattering, the double sided laminated tempered glass, will insure safety for all.

A customized design barrier structure is used to insure the utmost robustness and stability.

The barrier's hardware is designed and manufactured by KIN LONG, a top listed brand with reliable and long lasting market recognition.

Surface with anti-fingerprint technology, anti-stain, easy to clean, eco-friendly.

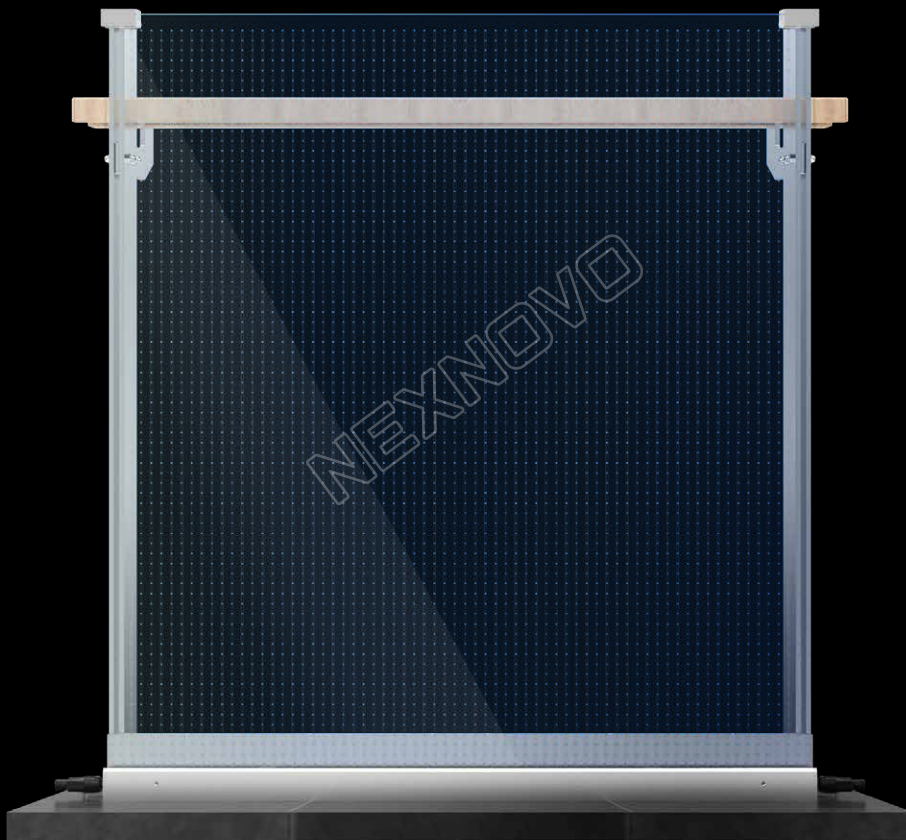
Waterproof cover protection is used to insure the power supplies are kept dry and well grounded.



# A variety of safety tests, in which guarantees reliability

---

---



**IP65**

---

waterproof  
and dustproof



**100,000 hours**

---

Long lasting



**Fire resistance V0**

---

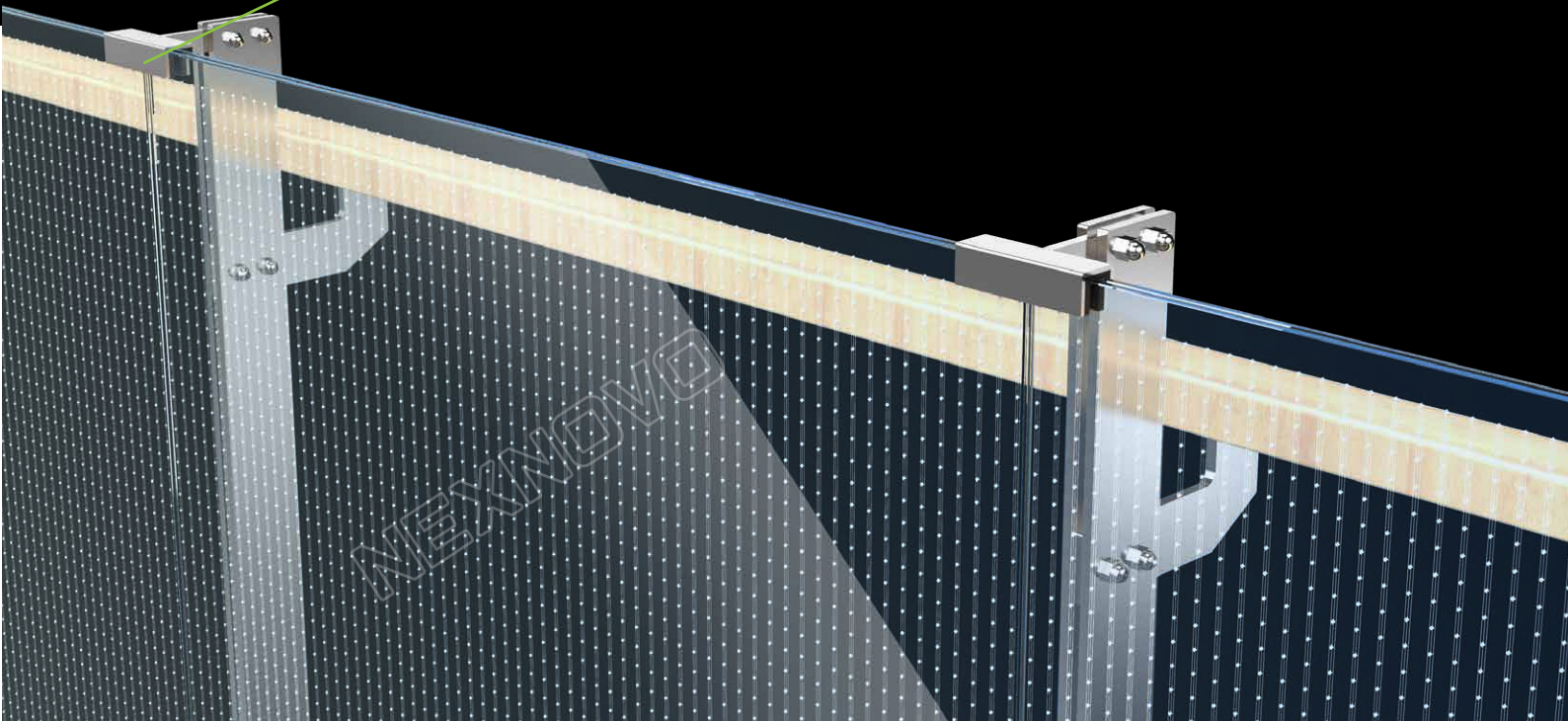
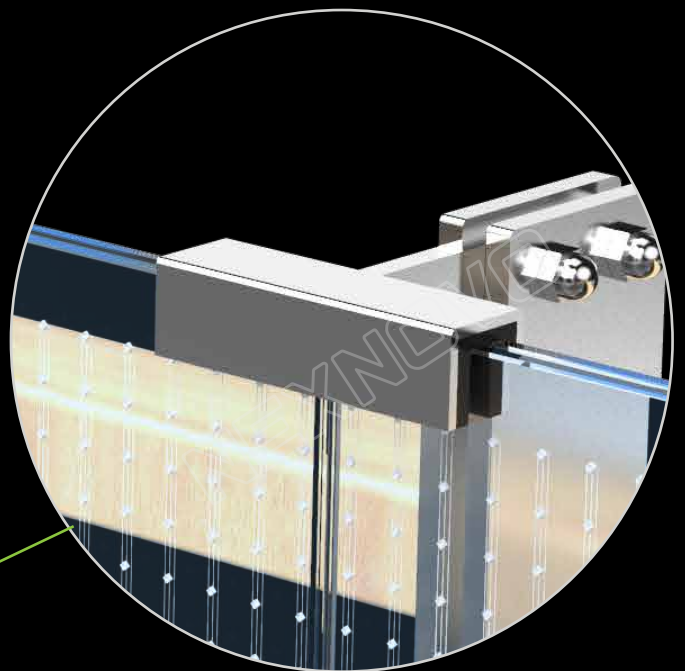
Fire resistance  
& anti-static

# Modular designs for easy installation and maintenance

---

---

With these designs, screens can be quickly installed and disassembled, saving time when issuing maintenance or setting up.





# Dynamic displays and vivid colors, beyond the sensory experience

---

---

True 16 bits grey scales, guaranteeing clear colors and contrasts Refresh rate of  $\geq 3840\text{Hz}$ , no more wavelike patterns when photographing or filming.

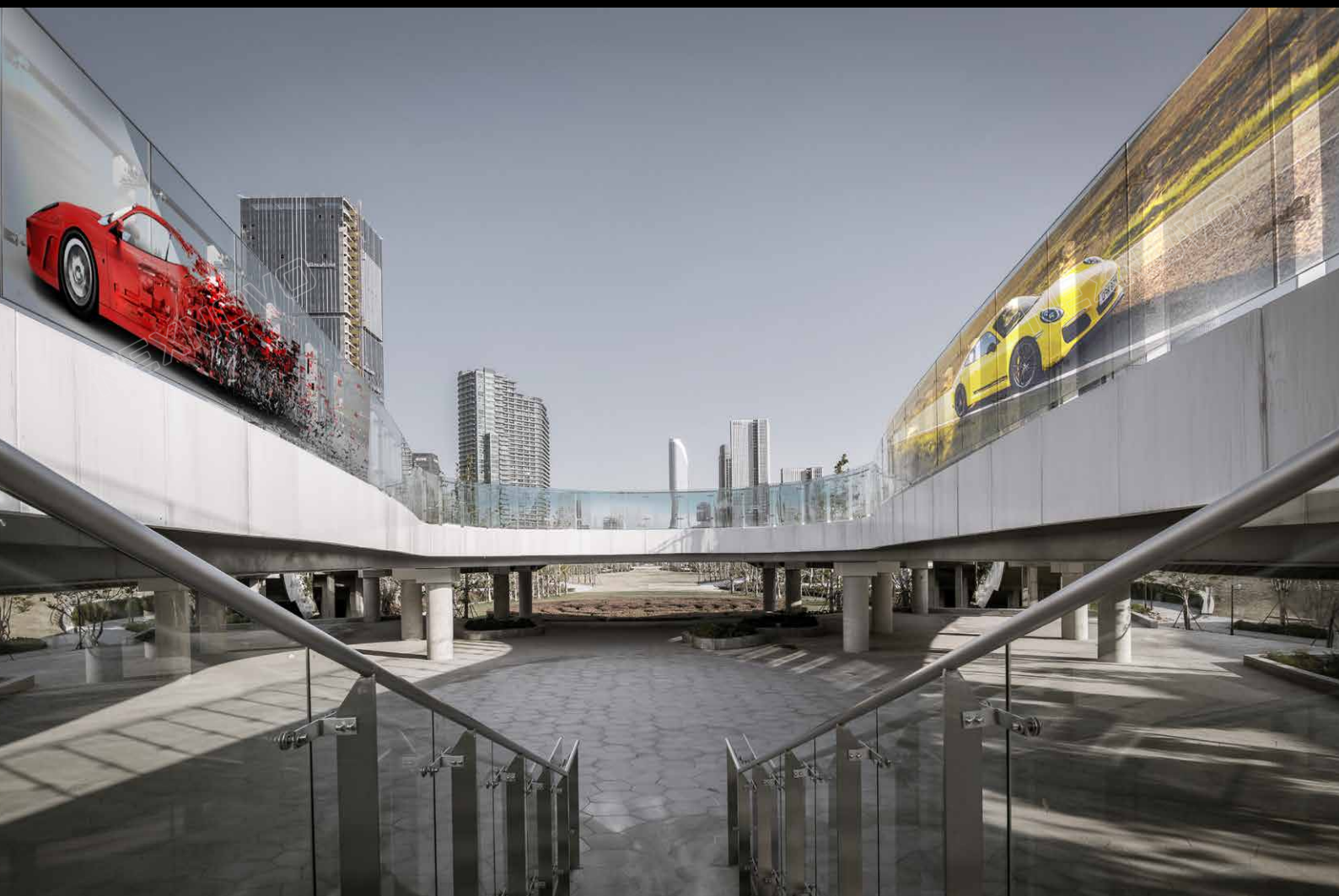


# Applications

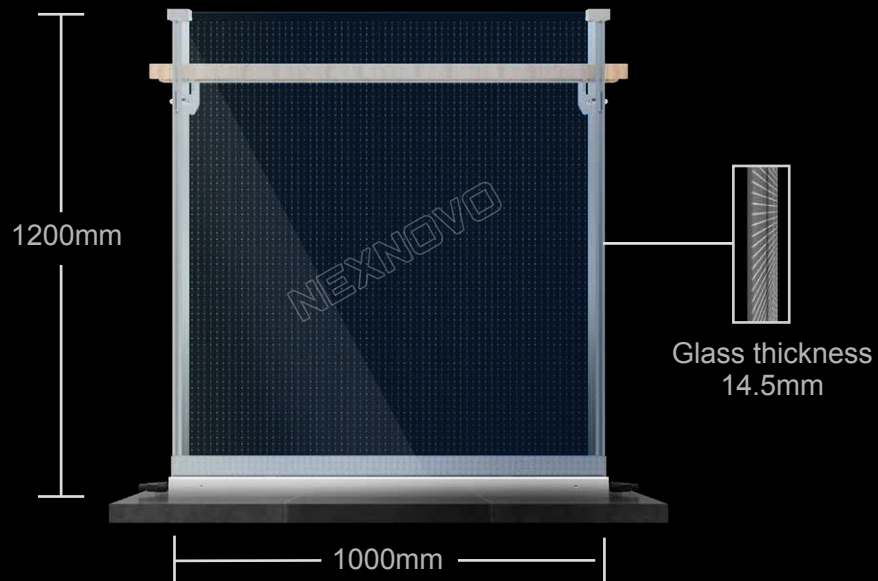
Airports, train stations, metro stations, shopping malls, tourist sites  
balustrades, stadiums, plazas and many more environments.







## Technical Specifications



Model	NB8		NB10	
LED	SMD2020		SMD2020	
Cabinet size	500x1200	1000x1200	500x1200	1000x1200
Pixel Pitch	W8.06x7.98		W10.42x9.8	
Cabinet Resolution	62x142	124x142	48x116	96x116
Resolution	8804	17608	5568	11136
Brightness	3000-3500		3000-3500	
Refresh Rate	≥3840		≥3840	
Transparency	88%		90%	
Max.Power	650W		580W	
Avg.Power	280W		250W	
Ingress Protection	IP65		IP65	



# NEXNOVO<sup>®</sup>

*for next innovation*



## Head Office

No.8,Qinglan Road1,Pingshan District, Shenzhen,China

Tel:0755-33078008

Web:www.nexnovo.com

© 2020 NEXNOVO TECHNOLOGY CO,LTD